

## Monthly Weather Summary in Thailand

### January 2022

In January 2022, the moderate high pressure area from China extended its ridge to cover upper Thailand during the beginning of the month after that it weakened and covering upper Thailand and the Southern China Sea and the westerly wind in high altitude prevailed over the northern and upper northeastern part during late month. These caused cool weather in the northern and northeastern parts throughout the month with cold weather in the upper northern part during early and late month while cool weather presented in most areas almost the entire month for the rest parts. The average temperature of this month was higher than normal in all parts especially in the northern and northeastern parts where the temperature was exceed 1.0 degree celsius. For rainfall, with the passage of the westerly trough over the northern and upper northeastern and the prevailing of the southeasterly wind over lower northeastern, central and eastern parts during mid-month, unseasonable rainfall was observed in upper Thailand during that time bringing above normal rainfall in many areas. In southern part, the weak northeast monsoon prevailed over the Gulf of Thailand and the southern part almost the whole month, less rainfall was found in the southern part with below normal rainfall. Monthly total rainfall was above normal rainfall in most parts i.e. northern part 10.2 mm (96%), central 9.9 mm (92%) and eastern part 3.8 mm (17%) while slightly below normal rainfall in the northeastern part 0.1 mm (1%) and below normal in southern part (east coast) 68.7 mm (66%) and southern part (west coast) 33.6 mm (67%).

**1-10 January :** The rather active high pressure area from China extended its ridge to cover upper Thailand during early period and later weakened and the another moderate high pressure areas dominated upper Thailand and the South China Sea during late period. These caused generally cool weather in upper Thailand with cold weather in many areas of upper northern and northeastern. The lowest minimum temperature of the period was  $11.0^{\circ}\text{C}$ , at Umphang in Tak province on January 9. In the mountainous areas and mountain tops, minimum temperature dropped to  $4.0^{\circ}\text{C}$  at Doi Inthanon, Chiang Mai province on January 2 and 3 and at Kew Mae Pan, Chom Thong in Chiang Mai province on January 6. For rainfall, there was no rain reported in upper Thailand while southern part received abundant rainfall from Chumphon province downward during early and mid-period due to the rather active northeast monsoon prevailed over the Gulf of Thailand and the southern part during early period and later weakened. Isolated to scattered rain with heavy to very heavy rainfall in some areas was found along the east coast whereas light to moderate rain was reported along the west coast. The highest daily rainfall was 98.5 millimeters at Sathing Phra, Songkhla province on January 5 with flash floods at Phatthalung province on January 4.

**11-20 January :** The high pressure area which covered upper Thailand and the South China Sea was weak, temperature was relatively increased from the previous period but cool weather remained in almost areas with cold weather in many areas in the upper northern and northeastern parts during early period. The minimum temperature was  $10.9^{\circ}\text{C}$  at Umphang in Tak province on January 12. In the mountainous areas and mountain tops, cold to very cold weather

was reported and the temperature climbed down to 4.0 °C at Kew Mae Pan, Chom Thong in Chiang Mai province on January 11. For rainfall, with the passage of the westerly trough over upper northern during the second half of the period and the prevailing of the southeasterly wind over lower central and eastern part on the last day of the period caused unusual rain in upper Thailand with isolated to scattered rain and heavy rainfall in some areas in the northern part during the second half of the period and unexpected rain also found for the rest parts on the last day of the period. The maximum daily rainfall in upper Thailand was 89.8 millimeter at Ban Khai in Rayong province on January 20 with the reported of the gusty wind at Nan, Phayao and Lamphun provinces on January 19 and 20 and hail occurred at Phayao province on January 19. In southern part, the northeast monsoon which prevailed over the Gulf of Thailand and the southern part was weak, less rainfall was found with isolated rain for few days mainly along the east coast. The highest daily rainfall of 103.0 millimeter was measured at Phrom Khiri in Nakhon Si Thammarat province on January 18.

**21–31 January :** The weak high pressure area covered the northern and upper northeastern part and the westerly wind in high altitude prevailed over the northern and upper northeastern during the middle and the end of the period. These caused generally cool weather in the northern and northeastern parts with cold weather in the upper northern part during the middle and the end of the period whereas cool weather in several areas for the rest parts. The lowest temperature was 8.1 ° at Umphang in Tak province on January 26. Cold to very cold weather in mountainous areas and mountain tops with the lowest temperature of 3.1 °C at Doi Inthanon, Chom Thong in Chiang Mai province on January 26. For rainfall, due to the influence of the westerly trough moved to cover the northern and upper northeastern part during early period and the easterly wind prevailed over the lower northeastern, central and eastern parts during that time accompanied with the southerly and southeasterly wind blowing over lower central and eastern parts during late period resulted in unusual rainfall in upper Thailand especially during early period that obtained fairly widespread rain with heavy rainfall in some areas. The highest daily rainfall in upper Thailand was 71.7 millimeter at Triamudomsuksanomklao School, Khet Saphan Sung in Bangkok Metropolis on January 22 with gusty wind was reported at Chai Nat, Sing Buri and Ang Thong provinces on January 21. In southern part, the northeast monsoon which prevailed over the Gulf of Thailand and southern part was weak throughout the period caused less rainfall in southern part. Isolated rain was found almost the period along the east coast while isolate rain with heavy rainfall for few days in the west coast. The maximum daily rainfall was 39.8 millimeter at Amphoe Mueang in Trang province on January 29.

---

**Note :** Rainfall, temperatures and natural disasters in this report were updated up to February 4, 2022.

Climatological Center  
Meteorological Development Division  
Meteorological Department

Monthly Current Report  
Rainfall and Accumulative Rainfall  
January 2022

Northern Thailand

Station	Temperature ( °c)		Rainfall (mm)		Accumulative rainfall (mm) Since 1 January	
	Mean	Above or below normal	Actual	Above or below normal	Actual	Above or below normal
Chiang Rai	21.2	1.0	89.0	72.5	89.0	72.5
Mae Hong Son	21.6	0.8	11.9	0.9	11.9	0.9
Phayao	22.2	1.5	29.5	15.2	29.5	15.2
Chiang Mai	23.2	1.2	26.7	15.4	26.7	15.4
Tha Wang Pha	22.0	1.2	37.3	22.3	37.3	22.3
Nan	23.3	1.5	11.2	-3.1	11.2	-3.1
Lamphun	23.1	1.0	25.7	17.2	25.7	17.2
Lampang	23.6	1.0	35.8	21.1	35.8	21.1
Mae Sariang	21.9	1.1	17.6	6.6	17.6	6.6
Phrae	23.6	1.0	25.8	12.4	25.8	12.4
Uttaradit	25.1	0.7	10.1	0.3	10.1	0.3
Bhumibol Dam	24.4	0.6	2.2	-6.0	2.2	-6.0
Tak	25.5	1.0	0.4	-8.6	0.4	-8.6
Mae Sot	24.4	1.4	27.9	20.4	27.9	20.4
Umphang	21.5	1.0	7.1	-1.8	7.1	-1.8
Phitsanulok	25.3	0.4	1.7	-5.3	1.7	-5.3
Lom Sak	25.1	0.7	16.5	9.7	16.5	9.7
Phetchabun	25.5	0.9	12.7	1.9	12.7	1.9
Wichian Buri	25.8	0.5	11.2	-2.6	11.2	-2.6
Kamphaeng Phet	25.4	0.5	15.1	9.8	15.1	9.8
Over the area	23.7	1.0	20.8	10.2 96%	20.8	10.2 96%

Northeastern Thailand

Station	Temperature ( °c)		Rainfall (mm)		Accumulative rainfall (mm) Since 1 January	
	Mean	Above or below normal	Actual	Above or below normal	Actual	Above or below normal
Nong Khai	24.5	1.5	26.2	15.6	26.2	15.6
Loei	23.2	1.0	13.4	5.8	13.4	5.8
Udon Thani	24.1	1.1	0.3	-6.1	0.3	-6.1
Nakhon Phanom	24.0	1.4	6.5	2.6	6.5	2.6
Sakon Nakhon	23.7	1.2	1.6	-4.5	1.6	-4.5
Mukdahan	24.3	1.3	4.6	1.6	4.6	1.6
Khon Kaen	24.9	1.1	3.8	-2.2	3.8	-2.2
Kosum Phisai	25.1	1.3	0.0	-7.0	0.0	-7.0
Roi Et	25.1	1.4	14.0	7.1	14.0	7.1
Chaiyaphum	25.5	0.9	24.1	15.2	24.1	15.2
Ubon Ratchathani	25.7	1.1	2.0	-1.2	2.0	-1.2
Tha Tum	25.4	1.3	4.6	-3.8	4.6	-3.8
Surin	25.8	1.3	1.0	-5.6	1.0	-5.6
Nakhon Ratchasima	25.7	0.9	1.9	-6.7	1.9	-6.7
Chok Chai	25.5	1.0	0.1	-8.6	0.1	-8.6
Nang Rong	24.7	0.5	0.8	-4.0	0.8	-4.0
Over the area	24.8	1.1	6.6	-0.1 -1%	6.6	-0.1 -1%

- NOTES :
- 1) Mean temperature is the average of daily dry-bulb temperature
  - 2) "T" is trace, rainfall amount less than 0.1 mm.
  - 3) "blank" is incomplete data.
  - 4) Temperature and rainfall are preliminary data.

Monthly Current Report  
Rainfall and Accumulative Rainfall  
January 2022

Central Thailand

Station	Temperature ( °c)		Rainfall (mm)		Accumulative rainfall (mm) Since 1 January	
	Mean	Above or below normal	Actual	Above or below normal	Actual	Above or below normal
Nakhon Sawan	26.5	0.8	28.9	23.3	28.9	23.3
Bua Chum	25.8	0.8	65.4	54.1	65.4	54.1
Lop Buri	27.3	0.6	4.4	-5.3	4.4	-5.3
Suphan Buri	27.3	1.2	0.4	-4.5	0.4	-4.5
Thong Pha Phum	25.3	0.4	1.8	-5.3	1.8	-5.3
Kanchanaburi	27.5	1.2	1.4	-6.2	1.4	-6.2
Bangkok Airport	28.0	0.8	29.1	12.7	29.1	12.7
Bangkok Metropolis	28.7	1.3	34.4	10.8	34.4	10.8
Over the area	27.1	0.9	20.7	9.9 92%	20.7	9.9 92%

Eastern Thailand

Station	Temperature ( °c)		Rainfall (mm)		Accumulative rainfall (mm) Since 1 January	
	Mean	Above or below normal	Actual	Above or below normal	Actual	Above or below normal
Prachin Buri	27.6	0.6	7.0	-0.7	7.0	-0.7
Kabin Buri	26.2	0.1	5.7	-9.0	5.7	-9.0
Aranyaprathet	27.3	0.7	9.5	-1.1	9.5	-1.1
Chon Buri	28.2	0.9	1.8	-15.8	1.8	-15.8
Ko Sichang	27.1	0.4	20.5	-1.1	20.5	-1.1
Pattaya	26.9	0.4	50.8	35.3	50.8	35.3
Sattahip	26.5	0.2	51.9	19.1	51.9	19.1
Rayong	26.7	0.2	47.4	18.1	47.4	18.1
Chanthaburi	27.3	0.6	19.7	-8.3	19.7	-8.3
Khlong Yai	27.2	0.4	52.3	1.2	52.3	1.2
Over the area	27.1	0.4	26.7	3.8 17%	26.7	3.8 17%

- NOTES :
- 1) Mean temperature is the average of daily dry-bulb temperature
  - 2) "T" is trace, rainfall amount less than 0.1 mm.
  - 3) "blank" is incomplete data.
  - 4) Temperature and rainfall are preliminary data.

Monthly Current Report  
Rainfall and Accumulative Rainfall  
January 2022

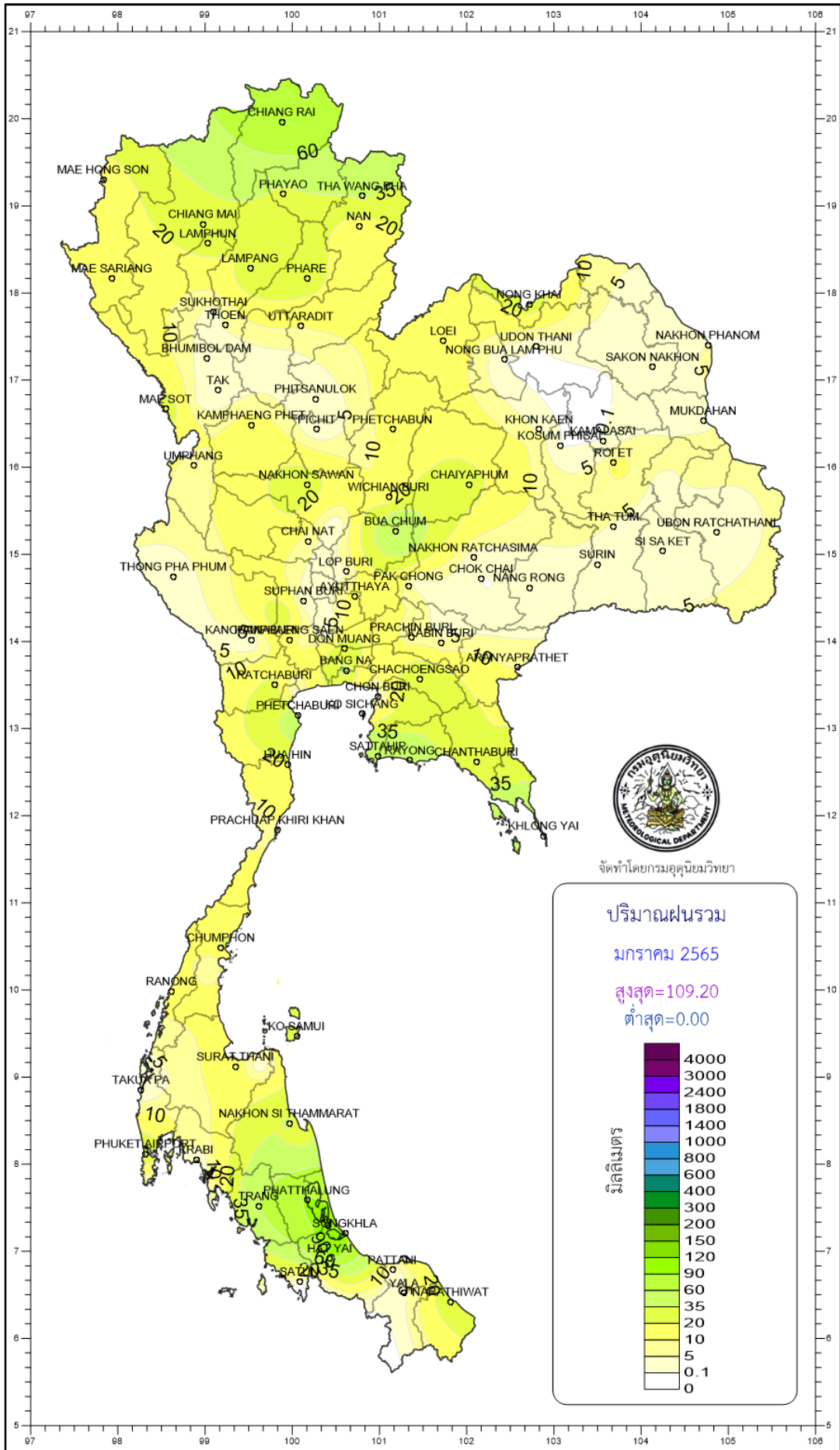
Southern Thailand, east coast

Station	Temperature ( °c)		Rainfall (mm)		Accumulative rainfall (mm) Since 1 January	
	Mean	Above or below normal	Actual	Above or below normal	Actual	Above or below normal
Phetchaburi	26.5	0.4	50.7	34.1	50.7	34.1
Hua Hin	26.9	0.6	19.9	-5.1	19.9	-5.1
Prachuap Khiri Khan	26.9	1.1	8.0	-37.4	8.0	-37.4
Chumphon	26.9	0.9	20.7	-76.0	20.7	-76.0
Surat Thani	26.3	0.4	15.8	-54.7	15.8	-54.7
Ko Samui	27.5	0.6	26.6	-99.9	26.6	-99.9
Nakhon Si Thammarat	26.6	0.5	37.4	-224.9	37.4	-224.9
Songkhla	27.5	0.3	91.6	-35.6	91.6	-35.6
Hat Yai Airport	26.5	0.3	86.6	-1.5	86.6	-1.5
Pattani Airport	27.0	0.7	1.1	-93.1	1.1	-93.1
Narathiwat	26.7	0.5	29.4	-161.9	29.4	-161.9
Over the area	26.8	0.5	35.3	-68.7 -66%	35.3	-68.7 -66%

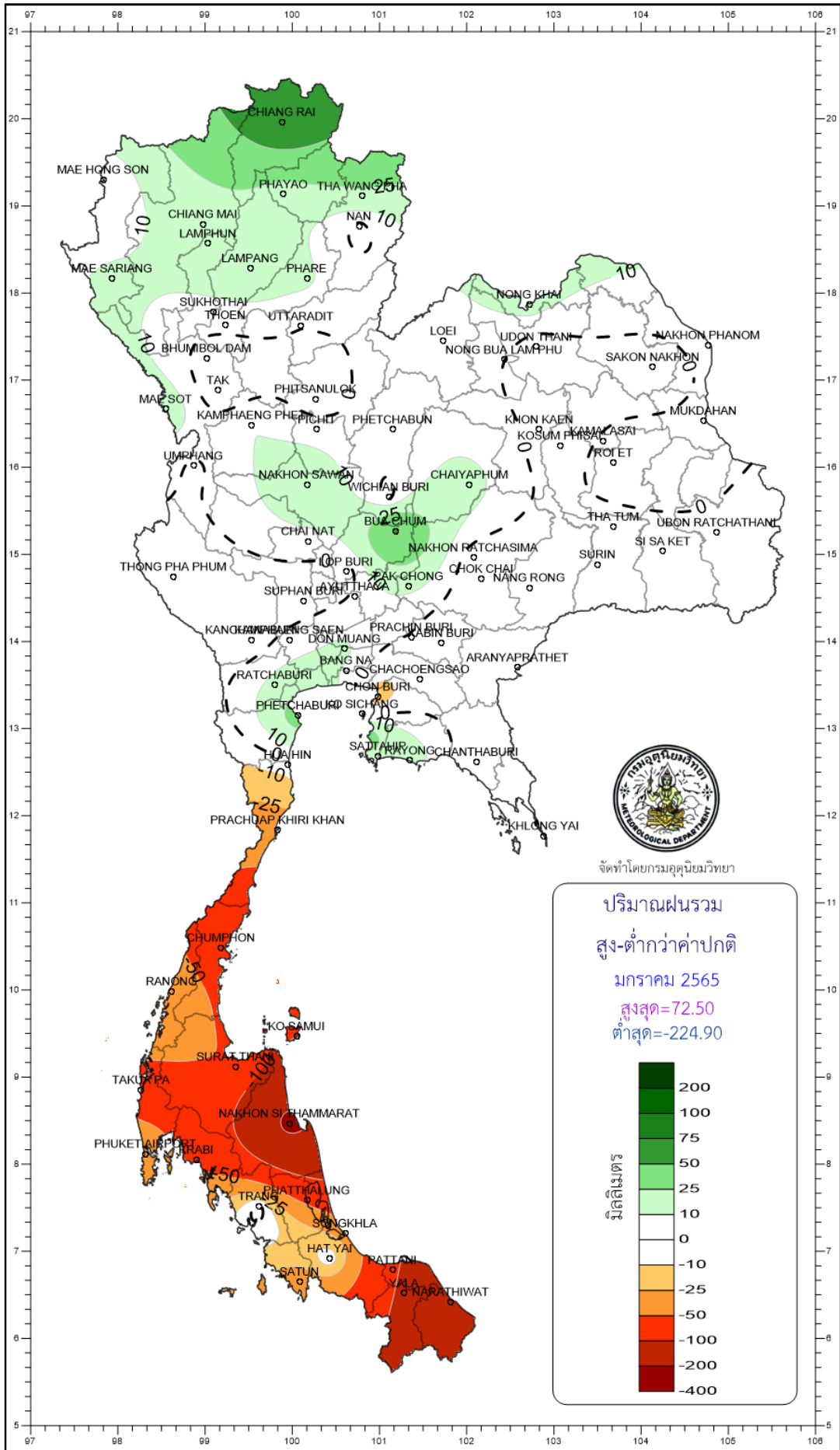
Southern Thailand, west coast

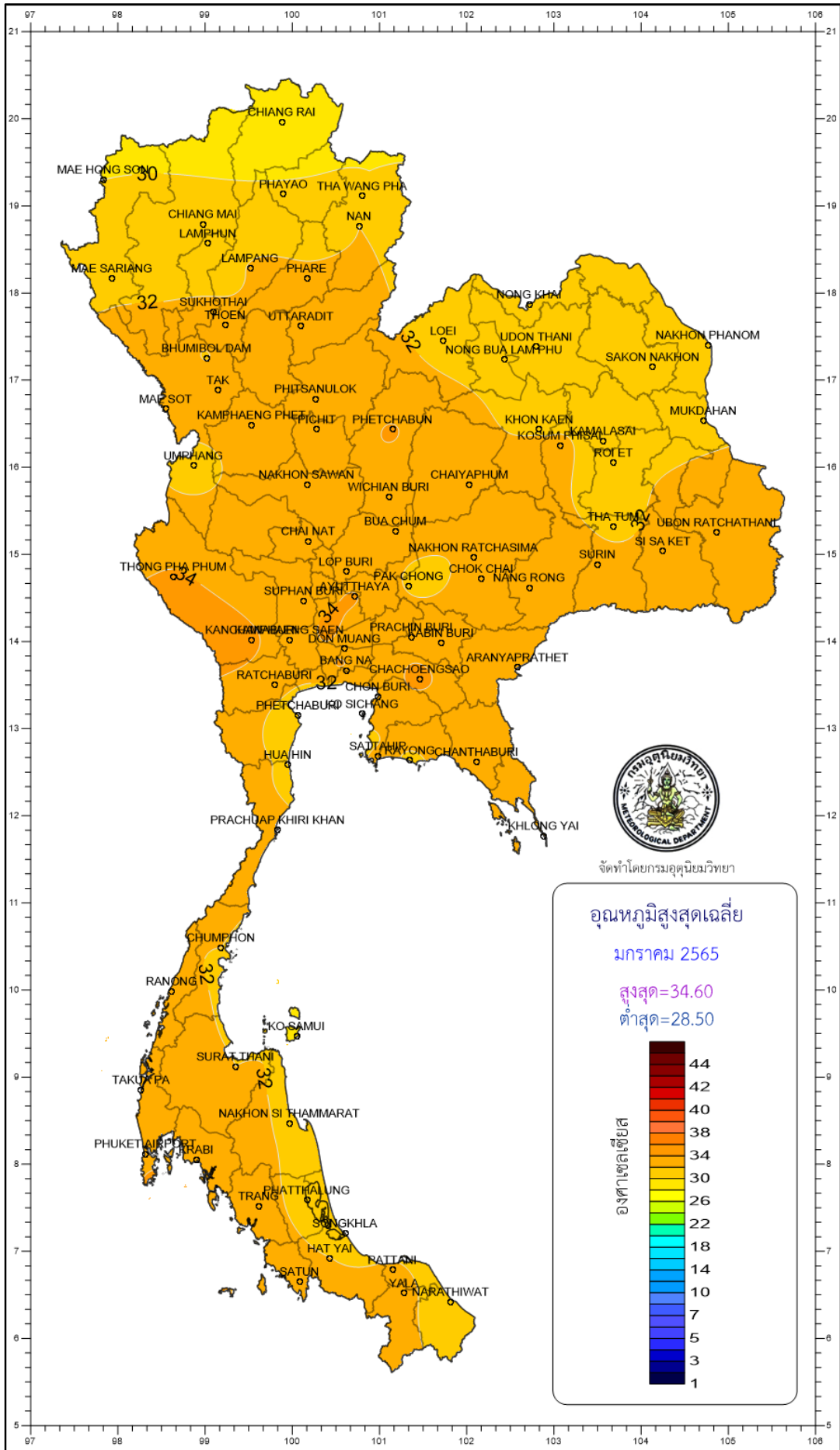
Station	Temperature ( °c)		Rainfall (mm)		Accumulative rainfall (mm) Since 1 January	
	Mean	Above or below normal	Actual	Above or below normal	Actual	Above or below normal
Ranong	27.4	0.5	13.8	-27.3	13.8	-27.3
Takua Pa	27.5	0.8	0.0	-62.1	0.0	-62.1
Phuket	29.1	0.8	6.0	-43.9	6.0	-43.9
Phuket Airport	28.0	0.6	31.4	-34.8	31.4	-34.8
Ko Lanta	28.2	0.5	1.6	-28.1	1.6	-28.1
Trang Airport	27.3	0.3	61.1	3.9	61.1	3.9
Satun	28.4	0.7	1.2	-42.4	1.2	-42.4
Over the area	28.0	0.6	16.4	-33.6 -67%	16.4	-33.6 -67%

- NOTES :
- 1) Mean temperature is the average of daily dry-bulb temperature
  - 2) "T" is trace, rainfall amount less than 0.1 mm.
  - 3) "blank" is incomplete data.
  - 4) Temperature and rainfall are preliminary data.

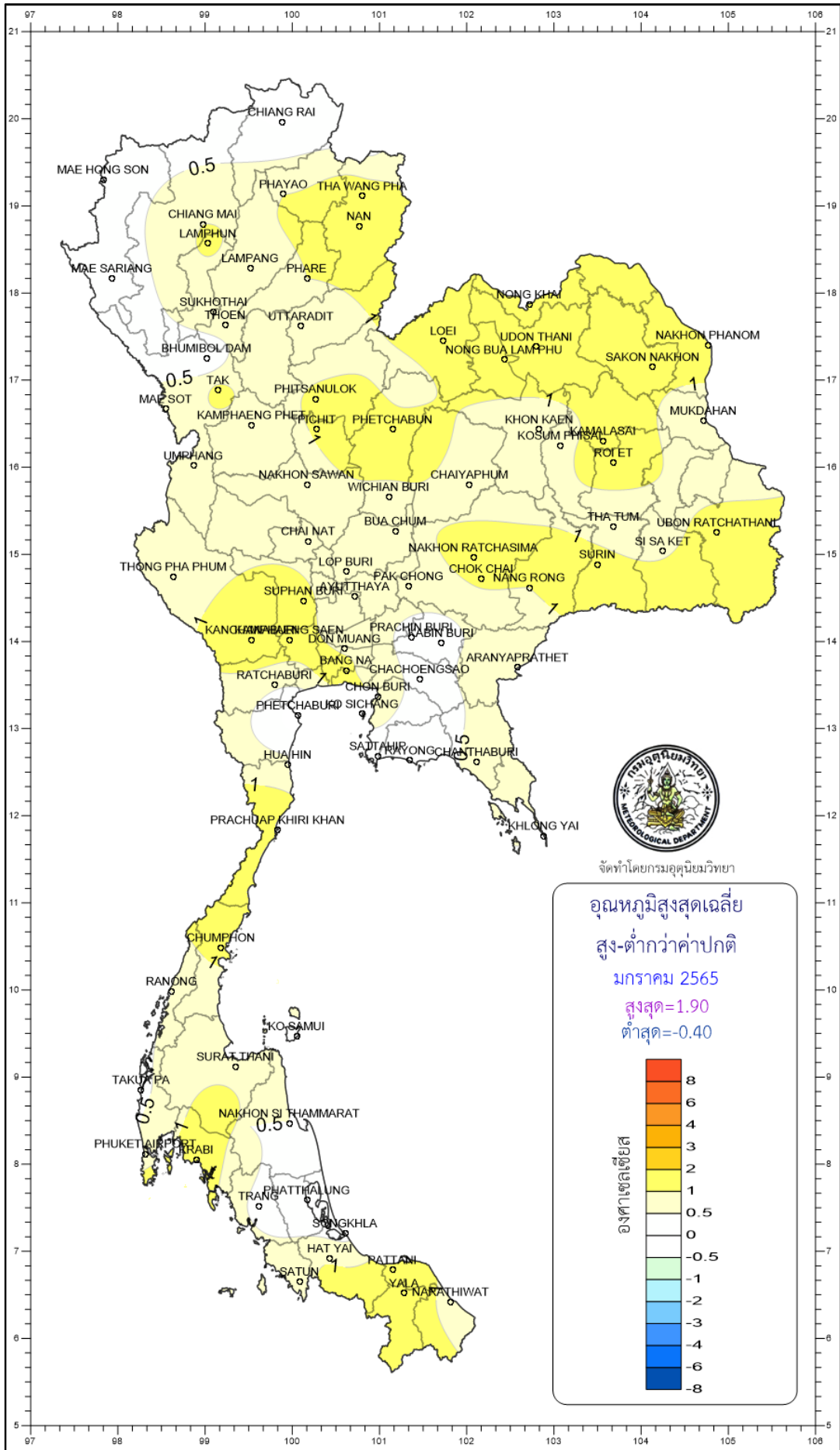


จัดทำโดยกรมอุตุนิยมวิทยา

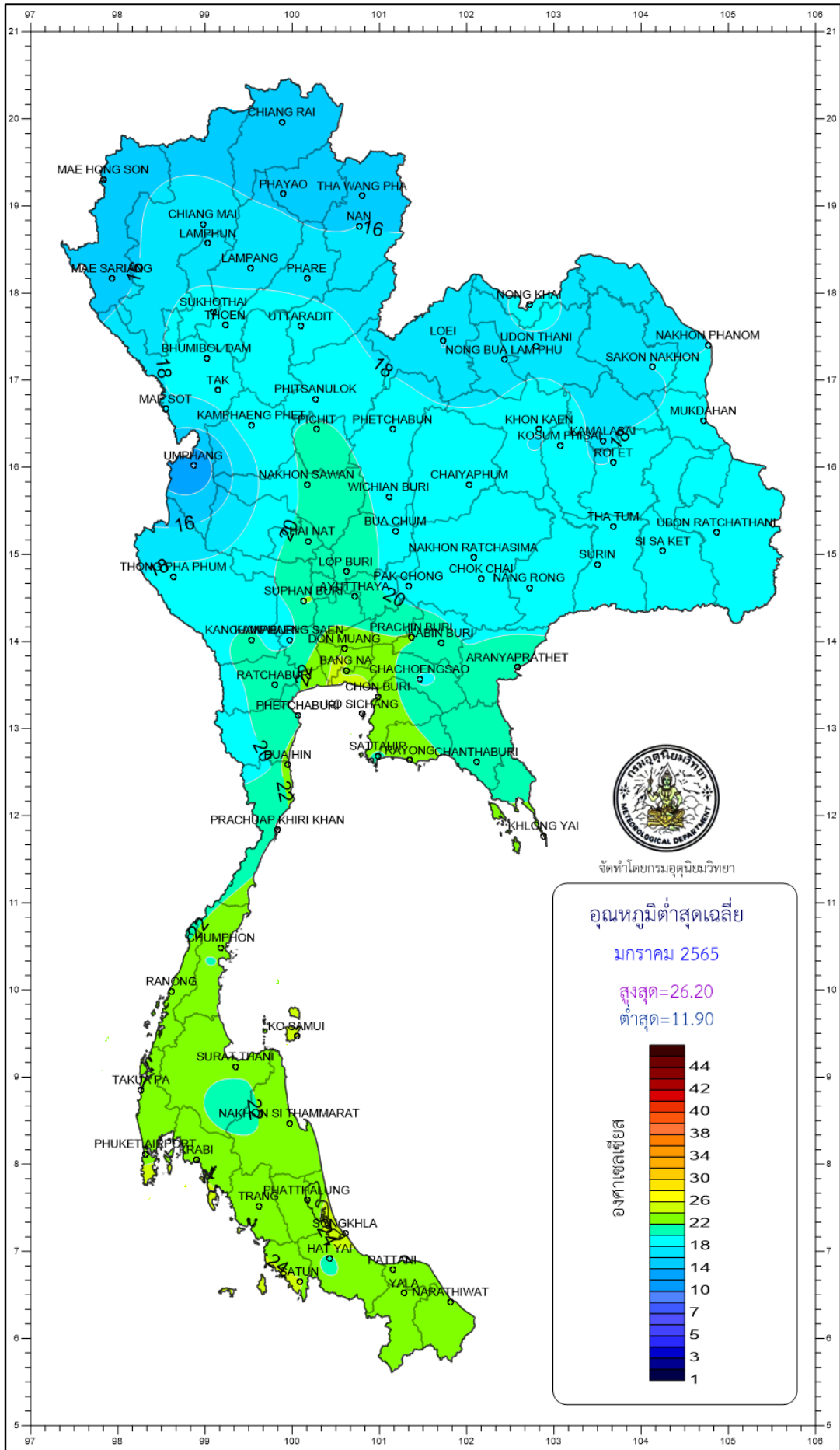




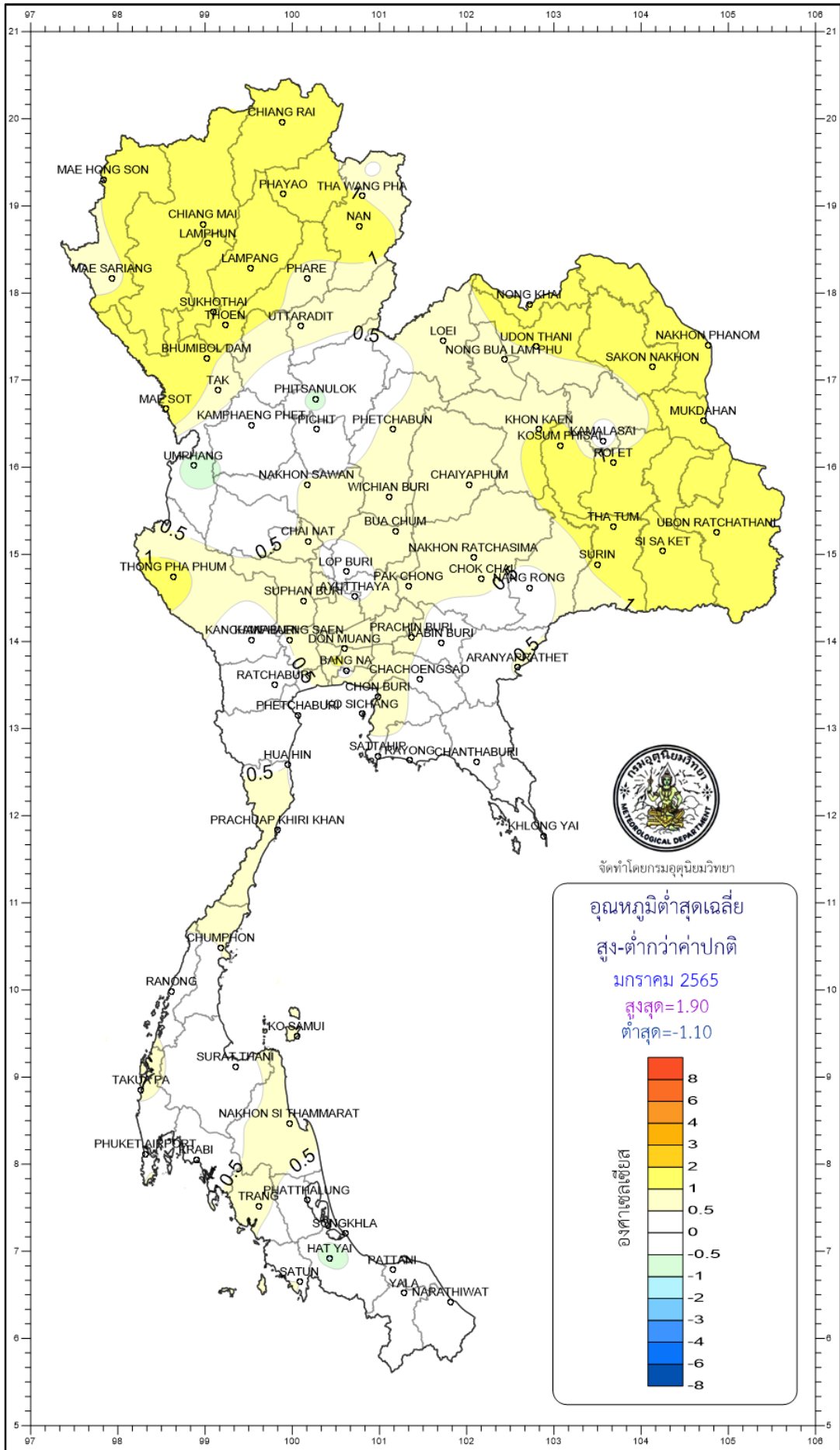




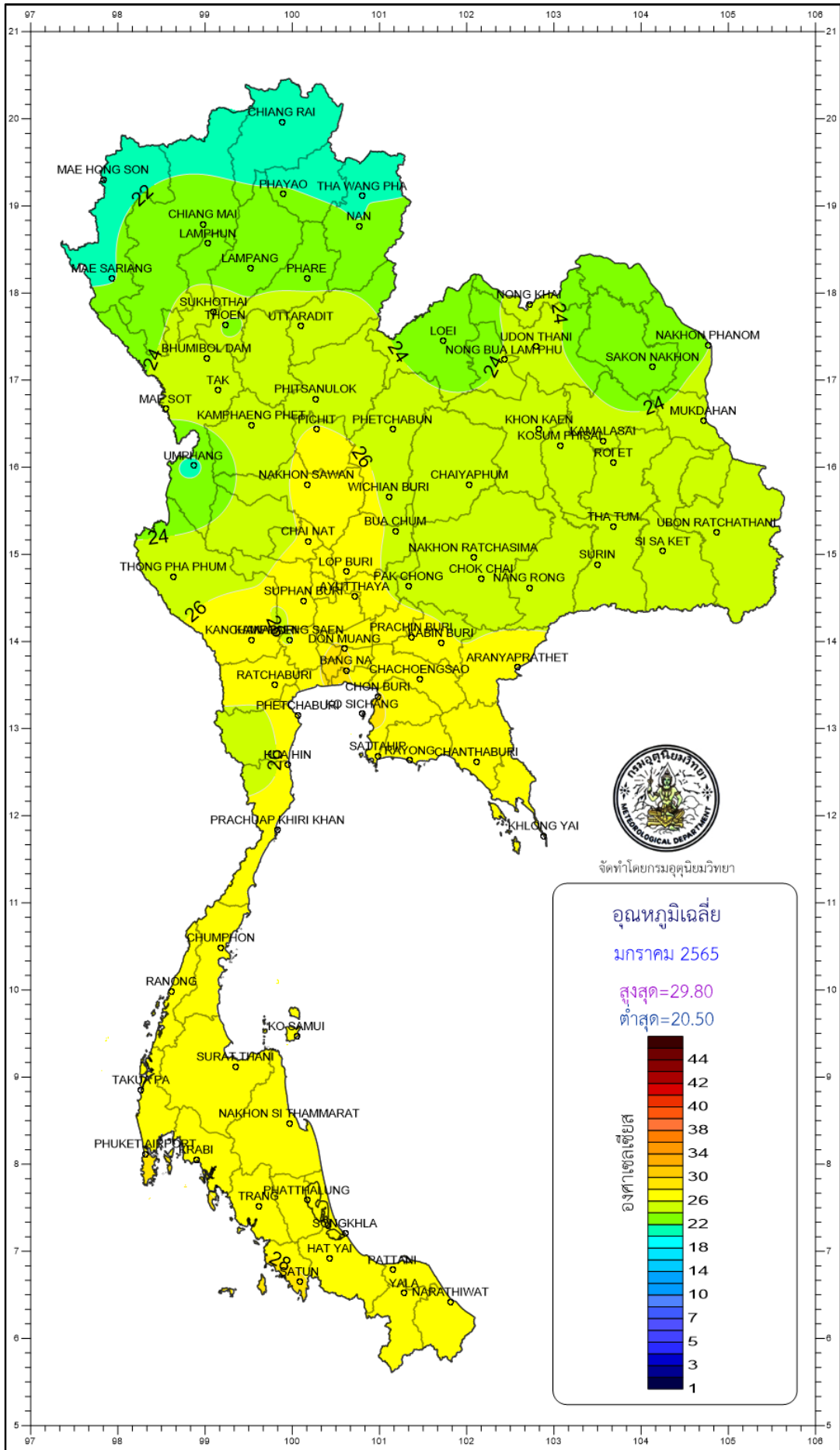
จัดทำโดยกรมอุตุนิยมวิทยา



จัดทำโดยกรมอุตุนิยมวิทยา

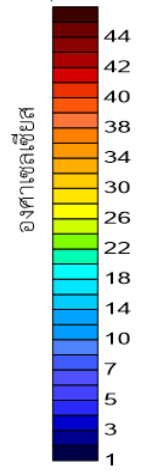


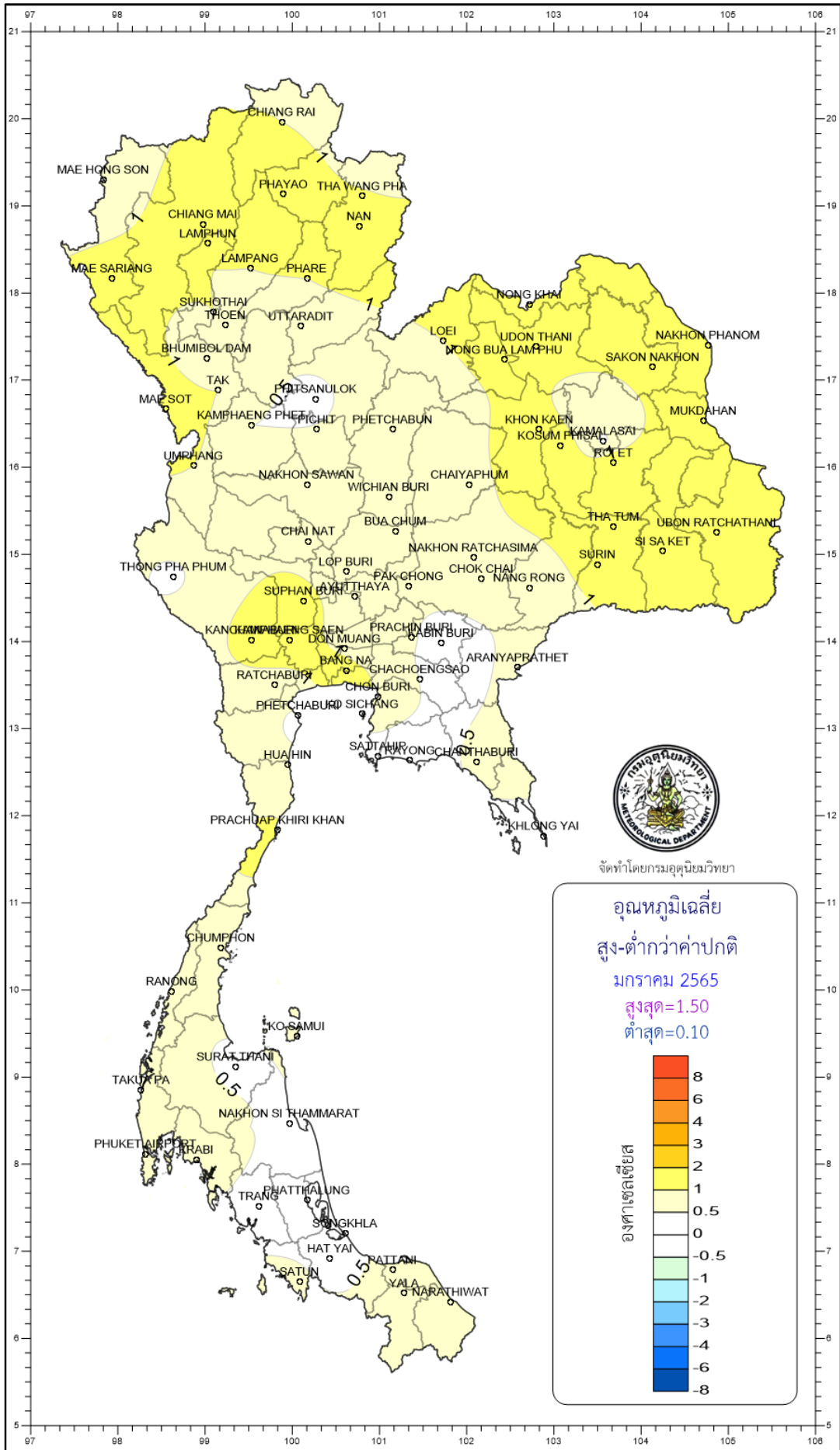
จัดทำโดยกรมอุตุนิยมวิทยา



จัดทำโดยกรมอุตุชัยมหาวิทยาลัย

อุณหภูมิเฉลี่ย  
มกราคม 2565  
สูงสุด=29.80  
ต่ำสุด=20.50





จัดทำโดยกรมอุตุนิยมวิทยา